



Certified Training Program on Corporate Sustainability and ESG Compliance by SDG Planet in Collaboration with GRIHA Council

OVERVIEW



Environmental, Social, and Governance (ESG) is becoming a corporate buzzword in few years, it is taking over the business agendas worldwide and corporates are embracing ESG and investing on a massive scale. ESG has a huge potential and demand for competent professionals in India. Indian businesses need to quickly catch up with their western counterparts and need to have a business strategy in place and be ready with their ESG roadmap for ESG implementation and Compliance Reporting. There is a huge opportunity for sustainability consultants to establish ESG Practice for companies across different levels.

OBJECTIVE OF THE TRAINING PROGRAM

01



BRIDGE THE GAP

Our training program aims to bridge the gap between knowledge and implementation. We provide practical insights and strategies to help professionals effectively integrate sustainability into their organizations.

02



COMPREHENSIVE FRAMEWORK

Acquaint professionals with a comprehensive framework for ESG (Environmental, Social, and Governance), Sustainability, and Sustainability Reporting guidelines and mechanisms. Gain their significance in today's business landscape.

03



BUILDING CAPACITIES

Acquaint professionals with a comprehensive framework for ESG (Environmental, Social, and Governance), Sustainability, and Sustainability Reporting guidelines and mechanisms. Gain their significance in today's business landscape.



ABOUT GRIHA COUNCIL

GRIHA (Green Rating for Integrated Habitat Assessment) was established by The Energy and Resources Institute (TERI) and Ministry of New and Renewable Energy (MNRE), Government of India in 2007 to promote and administer the development of sustainable buildings and habitats through GRIHA ratings. With a vision to stand for credibility, integrity, and inclusiveness, while upholding Indian ethos for future-ready and sustainable habitat, GRIHA Council facilitates the GRIHA rating tool which is the national rating system for green buildings in India. GRIHA is an indigenous green building rating developed in Indian climatic context and construction practices. The MNRE, Government of India recognized GRIHA as the national rating system to promote and foster sustainable building practices across the nation. In 2009, the committee of secretaries made 3-star GRIHA rating mandatory for all central government buildings.

At global platform, GRIHA Council has received accolades and recognition in areas such as carbon mitigation, energy efficiency, site planning, conservation, and efficient utilization of resources. India, in its Intended Nationally Determined Contributions (INDC) document submitted at COP 21 in Paris, has highlighted GRIHA as an indigenous green building rating system developed in India. In its third biennial update report to United Nations Framework Convention on Climate Change (UNFCCC), the Government of India has acknowledged the work done by GRIHA in the field of carbon mitigation in the building sector

ABOUT SDG PLANET

Our work at SDG planet is an effort to make a huge impact on Sustainability, business, and society by acting as a fourth pillar. We plan to gather, merge industry and functional knowledge to reduce carbon footprints, promote green projects, provide training on Sustainability Modules, Corporate Workshops, bring together Industry and individuals and enable innovation at scale to meet the industry needs.



PROGRAM AGENDA

TOTAL DURATION OF THE PROGRAM : 32 HOURS
MODE: ONLINE PLATFORM (WEB MEETING)

01 Duration : 4 Hours

Climate Change

- Understanding the science of climate change
- Impact of climate change on businesses
- Ways in which businesses can mitigate and adapt to climate change.

Sustainability Concept and Definitions

- Three pillars of sustainability: social, environmental, and economic
- Sustainable development goals (SDGs) and their relevance to businesses
- CoPs - history, concept, impacts, way forward

05 Duration : 4 Hours

Energy Management and Awareness

- Revision & Context Setting (15 mins)
- Overview of energy management
- Understanding of energy management standards & awareness on ISO 50001
- Best practices for implementing an energy management system (activities & case studies)

Life Cycle Assessment (LCA)

- Overview Lifecycle Assessment
- Online tools to calculate LCA
- Activities

02 Duration : 4 Hours

Fundamentals of Sustainability and Sustainability Practices

- Revision & Context Setting (15 mins)
- Key sustainability practices (global with focus on India)
- Implementing sustainability practices in the businesses

Introduction to Corporate Sustainability and ESG

- Definition and concept of Corporate Sustainability
- What is ESG and why is it important?
- Examples of companies that have implemented ESG practices

06 Duration : 4 Hours

Carbon Management

- Revision & Context Setting (15 mins)
- Importance of carbon management
- Introduction to carbon footprint
- Nationally & internationally recognized standardization for carbon emission and carbon neutrality
- Awareness on ISO 14064, PAS 2050
- Carbon Calculation Exercise

03 Duration : 4 Hours

Guidelines and Rating Indexes on Sustainability

- Revision & Context Setting (15 mins)
- Overview of sustainability guidelines
- Introduction to sustainability rating indexes
- Implementation of the guidelines by businesses
- Understanding Materiality

Sustainability Reports

- Purpose and benefits of sustainability reports
- Key components of a sustainability report
- BRSR- Business Responsibility and Sustainability Report BRSR- Business Responsibility and Sustainability Report (activities & case studies)
- Global Reporting Initiative (GRI)

07 Duration : 4 Hours

Water Management

- Revision & Context Setting (15 mins)
- Importance of water management
- Introduction to water management standards
- Best practices for water conservation and management

Waste Management

- Impact of waste on the environment
- Introduction to waste management standards
- Best practices for waste reduction, reuse, and recycling (activities & case studies)

Biodiversity

- Impact of biodiversity and business
- Government regulations
- Mitigation strategies

04 Duration : 4 Hours

Environmental Policy and Programs

- Revision & Context Setting (15 mins)
- Overview of environmental policy in India and its importance
- Introduction to ISO 14001 and its requirements
- Steps to develop an environmental improvement program

Environment, Health, and Safety (EHS)

- Introduction to EHS management
- Best practices for implementing an EHS management system.
- Activities & case studies

08 Duration : 4 Hours

Social Sustainability

- Revision & Context Setting
- Importance of social sustainability
- Components of social sustainability
- Best practices in ensuring social sustainability (activities & case studies)

Governance

- Importance of good corporate governance
- Components of good corporate governance
- Best practices in ensuring good corporate governance (activities & case studies)

EXPECTED OUTCOME:

- Deepened understanding: Enhance knowledge of corporate sustainability concepts like reporting and analysis.
- Risk mitigation & positive impact: Learn strategies to mitigate ESG risks and create a positive environmental and societal influence.
- Empowerment & responsible practices: Empower individuals to implement ESG principles, establish compliance, and drive sustainability performance.
- Create action plans: Develop comprehensive sustainability action plans that outline specific initiatives to improve sustainability performance and foster responsible business practices.
- Completion grants a certificate, recognizing commitment to ESG principles and responsible business.

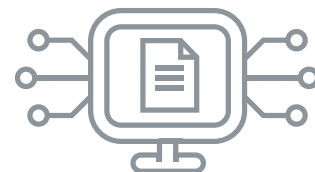
TRAINING FEE

**PROFESSIONAL
CHARGES**

**INR20,000 / USD 300
PER PARTICIPANT**

* Please note: The cost mentioned is exclusive of taxes. GST will be applicable as per the Government norms.

TERMS AND CONDITIONS



Thank you for your interest in enrolling in our upcoming online course on sustainability. Before proceeding with your enrollment, we kindly request that you carefully review and acknowledge the following terms and conditions:

Course Enrollment:

- Enrollment in the course is subject to availability and on a first-come, first-served basis.
- By submitting the enrollment form and completing the payment, you secure your spot in the course.
- We reserve the right to cancel or reschedule the course due to unforeseen circumstances. In such cases, we will provide alternative options or issue a full refund.

Payment:

- The course fee must be paid in full at the time of enrollment.
- Payment can be made through the provided payment link or via the specified payment methods.
- All fees are non-refundable, except in cases where the course is canceled by the organizers.

Confidentiality:

- Participants are prohibited from recording or sharing course sessions without explicit consent from SDG Planet

Participant Conduct:

- Participants are expected to maintain respectful and professional behavior throughout the course.

Privacy:

SDG Planet is committed to protecting your privacy and will handle your personal information in accordance with our privacy policy. By enrolling in the sustainability course, you agree to comply with the above terms and conditions. Should you have any questions or concerns, please reach out to our team for clarification before proceeding with the enrollment process.

Thank you for choosing SDG planet for your sustainability learning journey. We look forward for your participation.

REGISTRATION

For Registration for the training program, please refer to the link given below

[Register Now >>>](#)

PAYMENT



Payment must be made either in favor of SDG Planet Pvt Ltd or online as per the Bank details mentioned below. Please share the payment transfer details along with your Name, Email Id and Mobile number at email id

info@sdg-planet.com

Bank Details

Account Name : SDG PLANET PVT LTD

Kotak Mahindra Bank Ltd

A/c Number : 6547946672

Account Type : Current Account

IFSC Code : KKBK0004281

SWIFT Code : KKBKINBB

Branch : Unit No 7, Landmark Cyberpark,
Sector 67, Gurugram, Haryana 122002



Please contact us at info@sdg-planet.com for enrollment and registrations or visit us at <https://www.sdg-planet.com>.